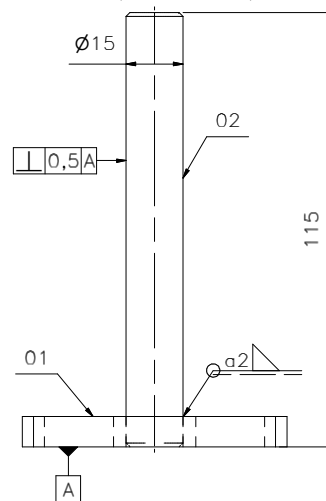
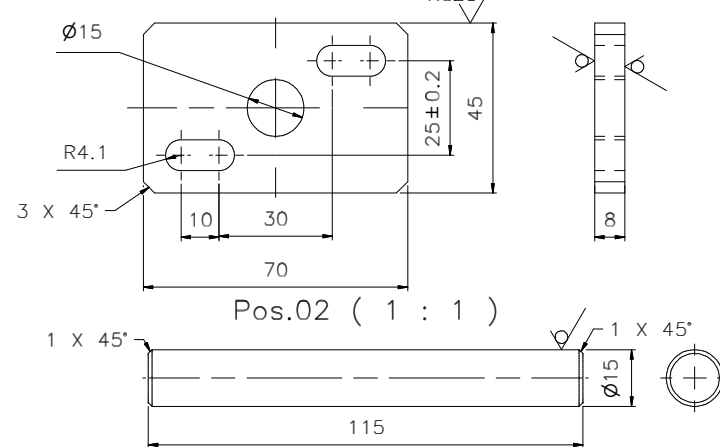


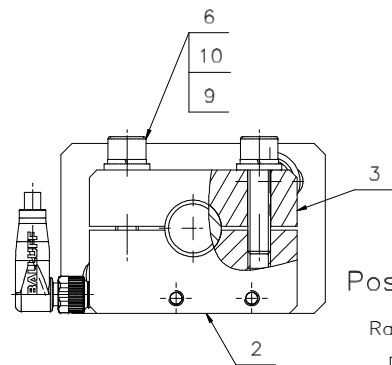
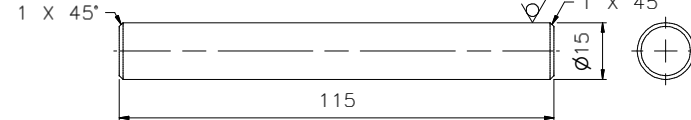
Pos.1 (1 : 1)



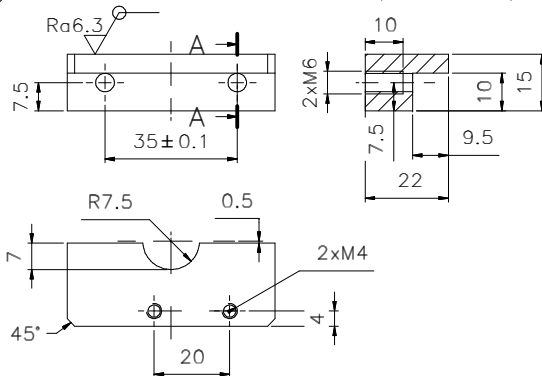
Pos.01 (1 : 1)



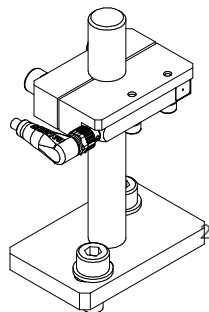
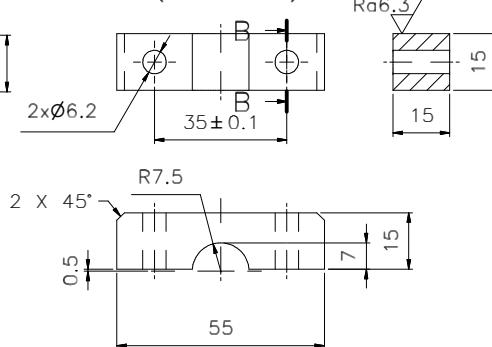
Pos.02 (1 : 1)



Pos.2 (1 : 1) A-A (1 : 1)



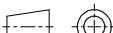
Pos.3 (1 : 1)



Annotations:

1. Sharpen edges - blunt.
2. Non-tolerated dimmenions make with tolerance classmK .
3. All dimmension are shown without machining allowances.
4. The roughness of the holes Ra6.3 unless otherwise indicated .

2	Spring washer DIN 127 - A 6,1	DIN 127 - A 6,1	10	galv.ste el	0
2	Flat washer A6.4	DIN 125 - A 6,4	9	galv.ste el	0
2	Flat washer A8.4	DIN 125 - A 8,4	8	galv.ste el	0
2	Screw with hexagonal socket M4x12	ISO 4762 - M4 x 12	7	galv.ste el	0
2	Screw with hexagonal socket M6x25	ISO 4762 - M6 x 25	6	galv.ste el	0.01
2	Screw with hexagonal socket M8x25	ISO 4762 - M8 x 20	5	galv.ste el	0.01
1	Sensor BOS Q08M-PS-LR20-S49 with angle plug	BALLUFF	4		0.01
1	Clamp 2	PN-EN 10029	3	S355JR	0.08
1	Clamp 1	PN-EN 10029	2	S355JR	0.09
1	Foot	PN-EN 10029, PN-EN 10060	1	S355JR	0.33
Quant.	Name of part	Sheet name, norm	Pos.	Material	Weight 1pcs. kg
Investor:					

Scale	Weight 1 set	Format	Nazwa rysunku		
1:1	0.55	A2	Calibration plate Sensor foot		
Engin.	06/15	papacac	Drawing number SM.01.00.00		
Draw.	06/15				
Check.	06/15				
Ver.	06/15				
Appr.	06/15				
Sheet			Revision		
1 / 1			00		
			Drawing number		
			SM.01.00.00		
			Your Adrees"		