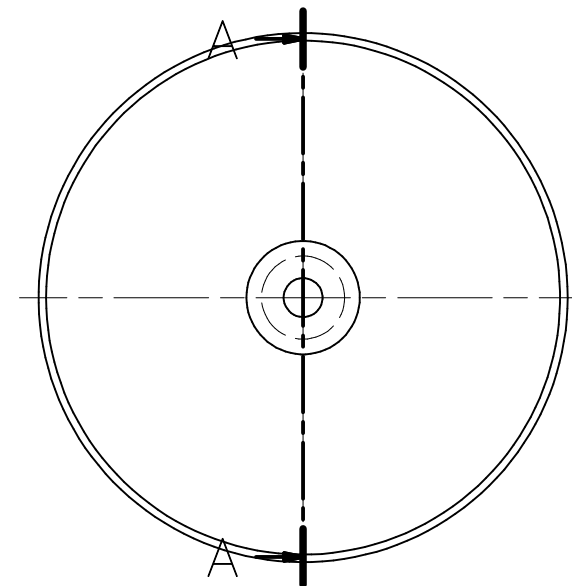
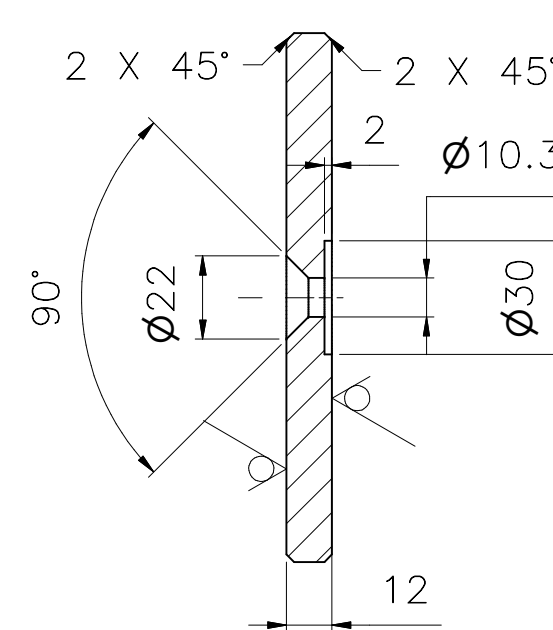


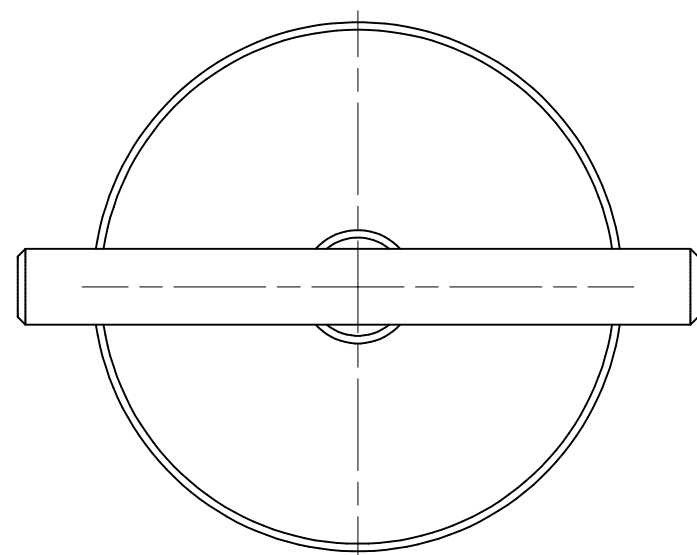
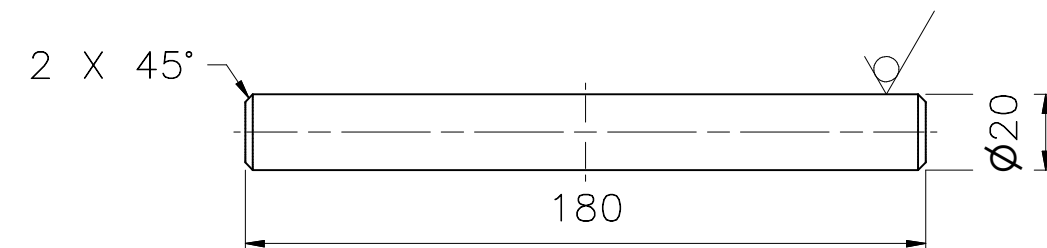
Item 2 (1 : 2)



A-A (1 : 2)



Item 3 (1 : 2)



Comments:

1. Blunt sharp edges .
2. Requirements for welding according to ISO 3834–3:2005.
3. Dimensions non–tolerated for machined parts accordance with DIN EN 22768: 1999 Class tolerance m.
4. Dimensions tolerated for welded structures perform under EN ISO 13920 in tolerance class.
5. All dimensions shown without allowances for machining.
6. The roughness of the holes Ra6.3 – unless indicated otherwise.
7. Clean the surfaces for painting to grade
 - Primer – min. paint coating thickness (microns)
 - Topcoat RAL:
 - The number of layers –
 - Minimum thickness of paint coating for respectively individual layers (um) –

4	1	Hexagon socket countersunk head p screw M10x25	DIN 7991 – M10x25	0	Steel, Galvanized	0.02	
3	1	Bar $\varnothing 20$, L=180	EN 10060	0	S355JR	0.44	
1	1	Bar $\varnothing 30$, L=400	EN 10060	0	S355JR	2.21	
2	1	Plate $\varnothing 140 \times 12$	EN 10029	0	S355JR	1.41	
Item	Qty.	Name of part	Drawing number, norm	Rev.	Material	Weight 1pcs. kg	Comments
Investor:							
Scale	Weight 1 set	Format	Drawing name				
1 : 2	4,1 kg	A2	Light Gantry Crane 500				
Engin.	2017-02-23	papacad	Drawing number				
Draw.	2017-02-23	papacad					
Check.	2017-02-23	papacad					
Ver.	2017-02-23	papacad					
Appr.	2017-02-23	papacad					
			Footer Tr30				