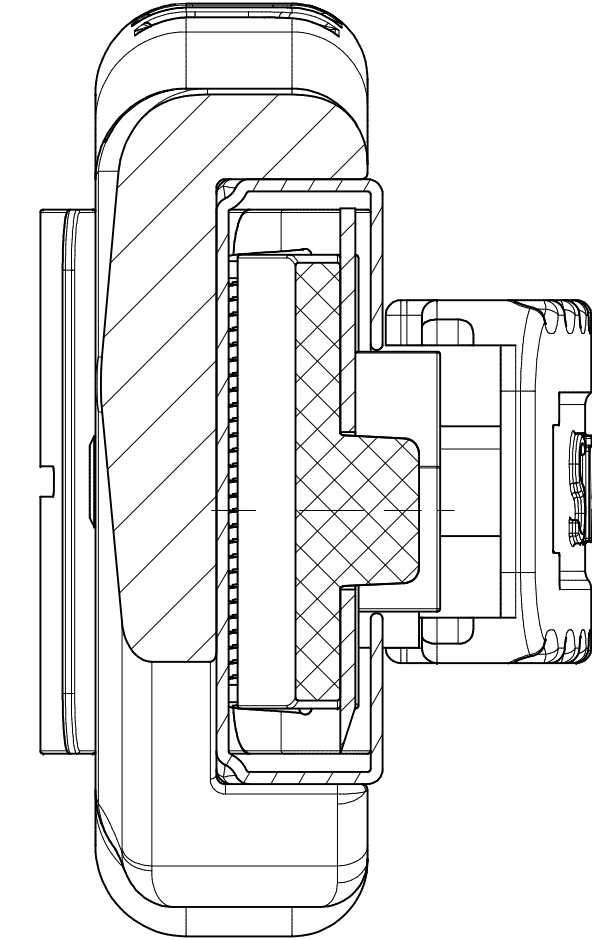
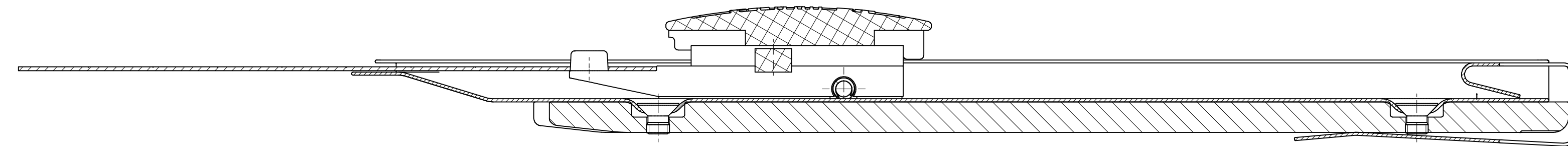


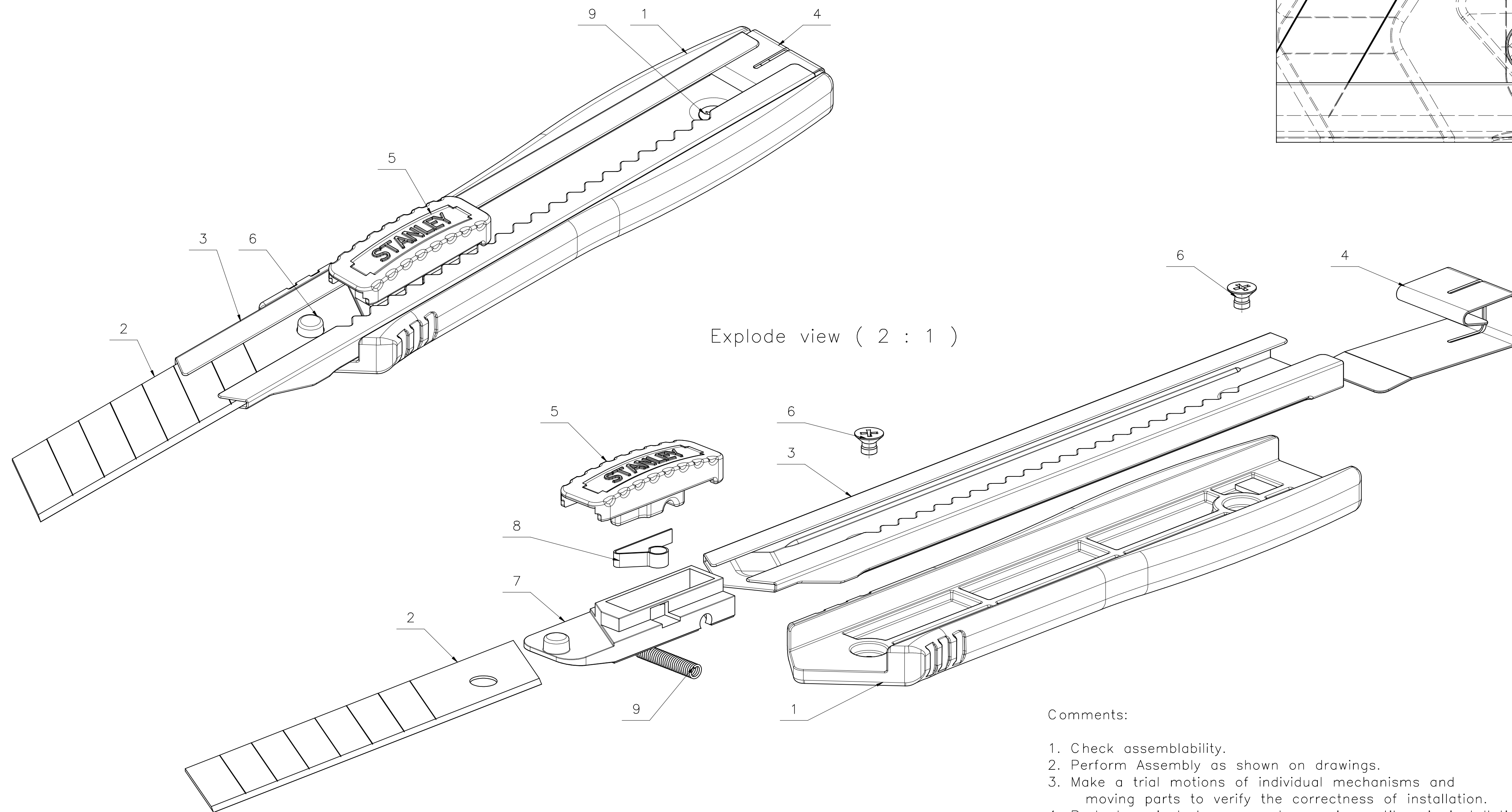
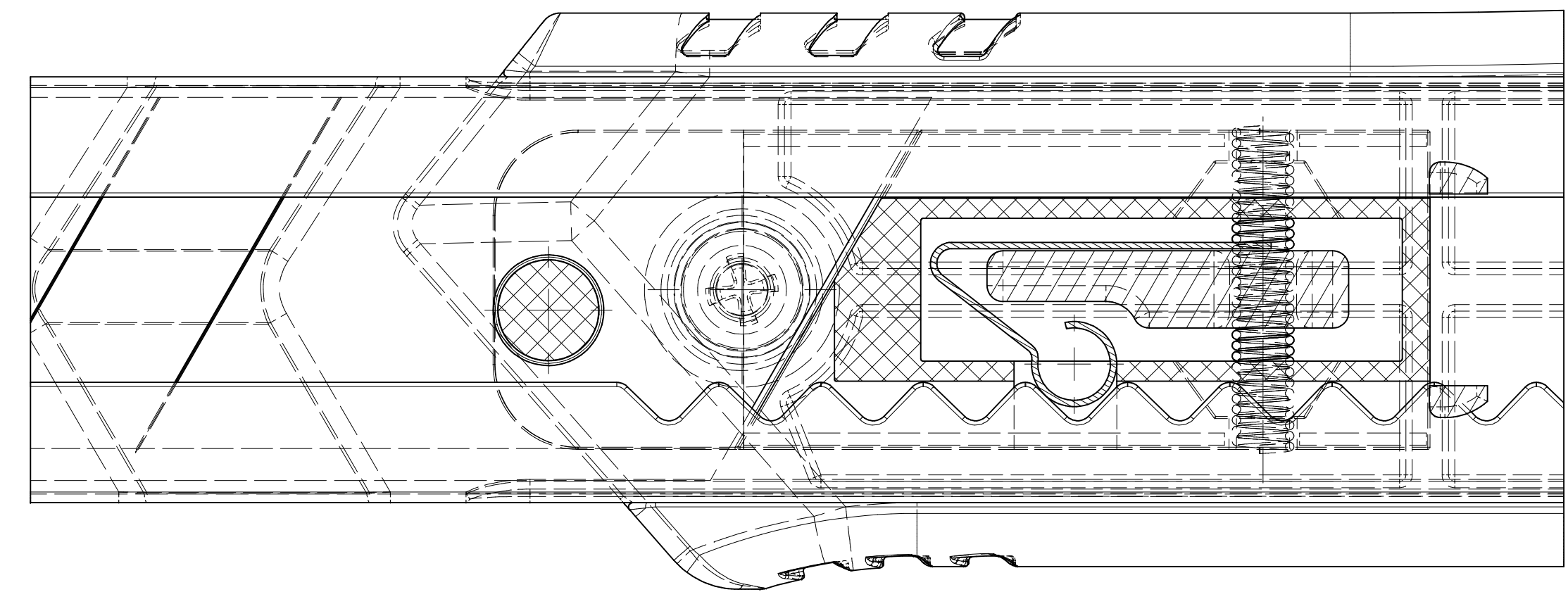
A2-A2 (4 : 1)



A1-A1 (2 : 1)



A3-A3 (4 : 1)



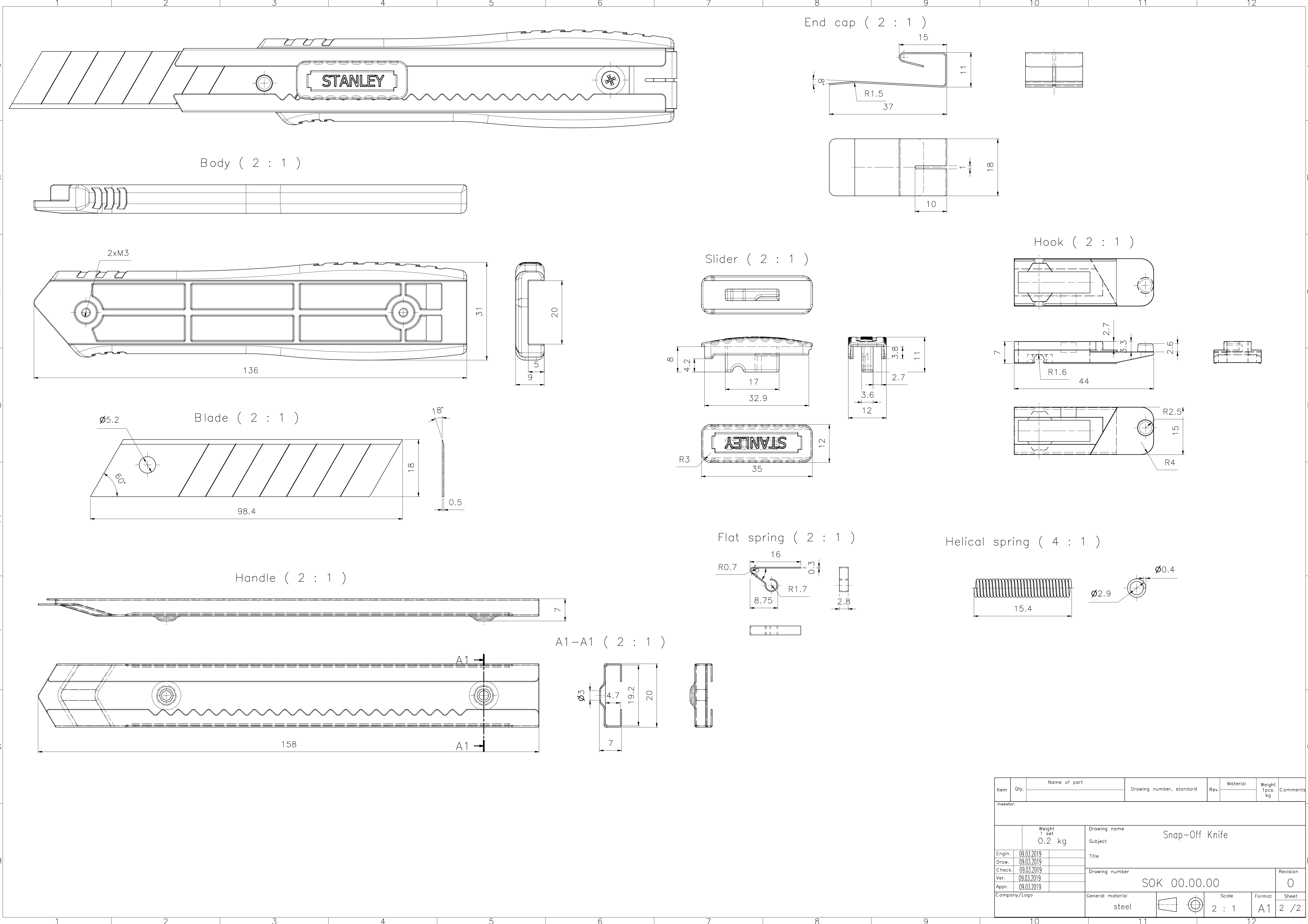
Explode view (2 : 1)

Comments:

1. Check assemblability.
2. Perform Assembly as shown on drawings.
3. Make a trial motions of individual mechanisms and moving parts to verify the correctness of installation.
4. Protect against damage and corrosion until main installation.

9	2	Screw M3x4	PN-86/M-82208 - M 3 x 4 H	0	Steel	0	
8	1	Helical spring	SOK 00.08	0	Steel	0	
7	1	Flat spring	SOK 00.07	0	Steel	0	
6	1	Hook	SOK 00.06	0	Polypropylene	0	
5	1	Slider	SOK 00.05	0	Polypropylene	0	
4	1	End cap	SOK 00.04	0	Steel	0	
3	1	Handle	SOK 00.03	0	Steel	0	
2	1	Blade	SOK 00.02	0	Steel	0	
1	1	Body	SOK 00.01	0	Steel	0.1	

Item	Qty.	Name of part	Drawing number, standard	Rev.	Material	Weight 1 pcs. kg	Comments
Investor:							
		Weight 1 set 0,2 kg	Drawing name Subject Snap-Off Knife				
Engin.	09.03.2019		Title				
Draw.	09.03.2019		Drawing number				
Check.	09.03.2019		Revision				
Ver.	09.03.2019		SOK 00.00.00				
Appr.	09.03.2019		0				
Company/Logo			General material	Scale	Format	Sheet	
			steel	2 : 1	A1	1 / 2	



Item	Qty.	Name of part	Drawing number, standard	Rev.	Material	Weight 1 pcs. kg	Comments
Investor:							
		Weight 1 set 0.2 kg	Drawing name Subject Title				
Engin.	09.03.2019		Drawing number Revision				
Draw.	09.03.2019		SOK 00.00.00				
Check.	09.03.2019		0				
Ver.	09.03.2019						
Appr.	09.03.2019						
Company/Logo		General material steel	Scale 2 : 1	Format A1	Sheet 2 / 2		